

A level Geography

at Conyers Sixth Form



Geography is the study of Earth's landscapes, peoples, places and environments, quite simply, about the world in which we live. So the issues we study are relevant to you and your future. If you want an informed opinion about current issues from global warming to the pensions crisis, the Israeli Palestinian conflict to the future of the NHS; this is the subject for you!

Geography links to science through Physical Geography, the arts through Human Geography and maths through statistics. What's more, the skills you learn through Geography are on the top of any employer's tick list. It really is the perfect subject to give you flexibility and diversity!

Course Content

Human Geography:

- Contemporary Urban Environments
- Changing Places
- Global Systems of Governance

Physical Geography:

- Water and Carbon Cycles
- Coastal Landscapes
- Natural Hazards

Assessment:

At the end of year 13 you will take two papers, each 2.5 hours long. You will also be required to complete an investigation into your chosen area of the course and produce a 3000-4000 write up.

Opportunities and Fieldwork in Geography:

Fieldwork lies at the heart of Geography and we recognise the importance of learning in the field. Previous examples of fieldwork opportunities have included:

- Residential to Manchester looking at Urban Resurgence
- Soil Infiltration study to North York. Moors
- A study of psammosere succession at Redcar
- A study of urban deprivation in Middlesbrough



What can you do with A level Geography?

Studying A Level Geography can be extremely valuable if you wish to pursue a career in the following;

- Environmental Science: Geology, Industrial Management, Energy, Meteorology, Earth Science, Geophysics Oceanography, Physical Science, Engineering, Surveying.
- Retail and Industrial Management: Commerce, Banking, Insurance, Housing, Town and Country Planning, Travel, Tourism, Journalism, Transport, Accountancy, Marketing, Systems Analysis, GIS, Development Planning, Information Technology.
- Architecture, Landscape Design, Cartography, Surveying, Graphic Design.
- Environmental Health, Catering Recreational and Institutional Management, Agriculture, Ecology, Forestry, Environmental Science, Soil Science.

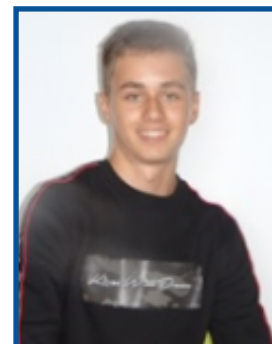


Abbie Tunnicliffe (left)
Environmental Science.
Newcastle University.
(ABB entry requirement)



Zoe Ingledew (left)
History and Politics.
Sheffield University.
(AAB entry requirement)

Ben Massey (right)
Quantity Surveying
Edinburgh University
(BCC entry requirement)



Geography Exam Board: AQA

Contact: Charlotte Cooper

ccooper@conyers.org.uk

Conyers Sixth Form

sixthform@conyers.org.uk

01642 783253